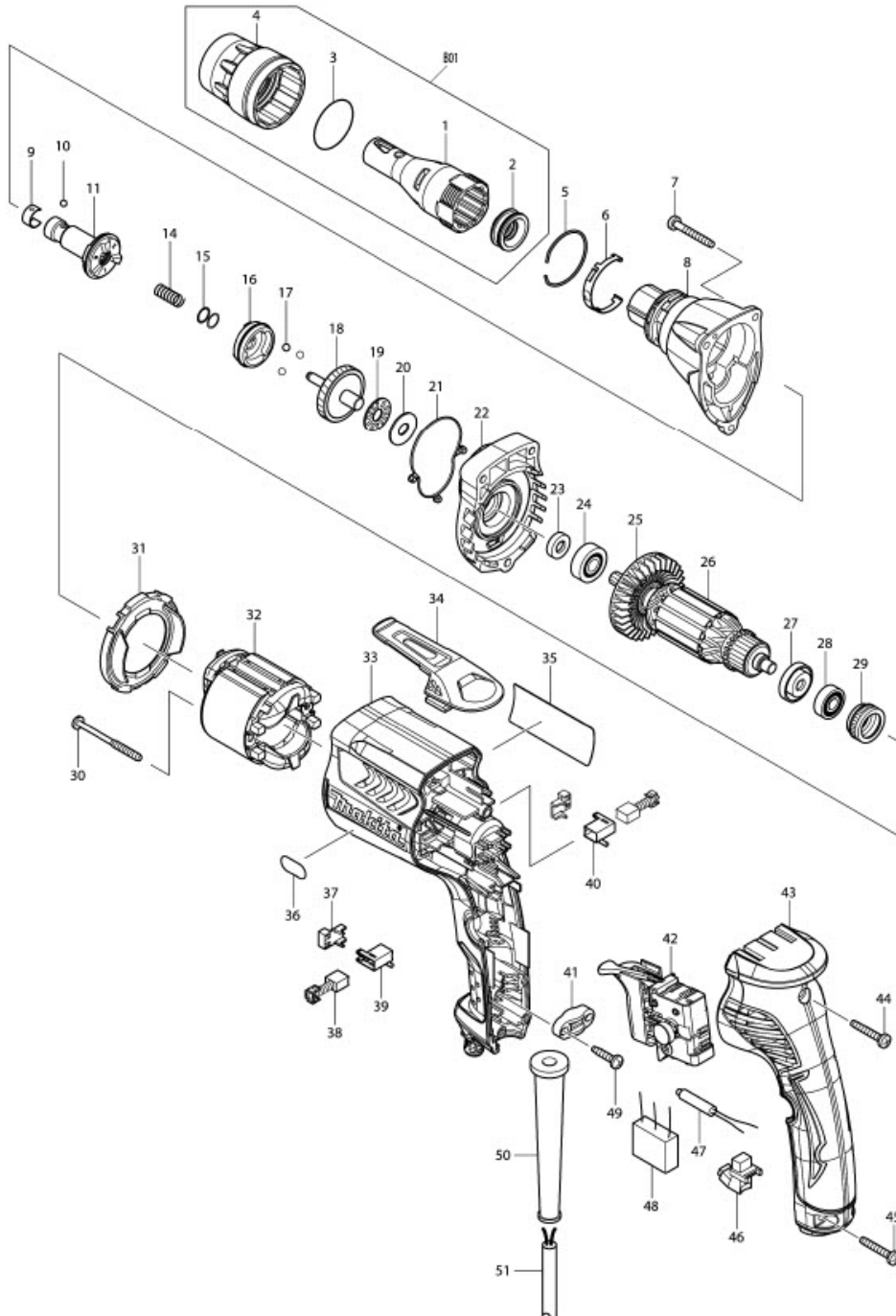


Part Diagram

Model No.FS6300 DRYWALL SCREWDRIVER



Item	Sub	Parts No.	Parts Description	Qty
1		158876-0	LOCATOR L COMPLETE	1
2		424163-2	DUST SEAL SLEEVE	1
3		424235-3	SEAL RING 30	1
004-1		455591-0	LOCK RING	1
5		233974-2	RING SPRING 33	1
6		232245-4	LEAF SPRING	1
7		266361-0	TAPPING SCREW 4X30	3
8		158881-7	GEAR HOUSING HSA COMPLETE	1
9		232050-9	LEAF SPRING	1
10		216001-0	STEEL BALL 3.5	1
11		158886-7	SPINDLE 125S COMPLETE	1
14		234121-8	COMPRESSION SPRING 8	1
15		267202-3	FLAT WASHER 8	2
16		223170-0	CLUTCH CAM 125S	1
17		216008-6	STEEL BALL 4	3
18		158885-9	GEAR 38S COMPLETE	1
19		216415-3	THRUST NEEDLE CAGE 821	1
019-1		216415-3	THRUST NEEDLE CAGE 821	1
20		216212-7	WASHER 821	1
21		424162-4	SEAL RING	1
22		158874-4	GEAR HOUSING COVER COMPLETE	1
23		451100-3	RING 8	1
24		210007-0	BALL BEARING 608VV	1
25		240083-0	FAN 52	1
26		515754-1	ARMATURE ASSEMBLY 240V	1
26	D10		INC. 23-25,27,28	
27		681636-0	INSULATION WASHER	1
28		210062-2	BALL BEARING 607ZZ	1
29		421868-5	LABYRINTH RUBBER RING 19	1
30		266467-4	TAPPING SCREW 4X50	2
31		450880-8	BAFFLE PLATE	1
32		633693-4	FIELD 220-240V	1
33		450877-7	MOTOR HOUSING S	1
34		162272-6	HOOK	1
35		866558-7	FS6300 NAME PLATE	1
36		808576-9	6000RPM INDICATION LABEL	1
37		689111-0	SPACER	2
38		191962-4	CARBON BRUSH CB-419	1
39		643948-9	BRUSH HOLDER	1
40		643951-0	BRUSH HOLDER	1
41		687123-7	STRAIN RELIEF	1
42		650614-1	SWITCH	1
43		158877-8	HANDLE COVER S COMPLETE	1
43	C10	263002-9	RUBBER PIN 4	2
44		266374-1	TAPPING SCREW 4X25	1
45		266374-1	TAPPING SCREW 4X25	2
046-1		631939-2	LIGHT CIRCUIT	1
49		265995-6	TAPPING SCREW 4X18	2
50		682559-5	CORD GUARD 8	1
51		692021-2	POWER SUPPLY CORD 1.0-2-2.5	1
052-1		892811-5	CLEAR LABEL	1
53		423413-2	RUBBER PLATE	1
A01		784261-7	+BIT 2-25	2
A02		784801-1	MAGNETIC BIT HOLDER 6.35-76	1
B01		197024-6	LOCATOR L SET	1
B01	D10		INC. 1-4	