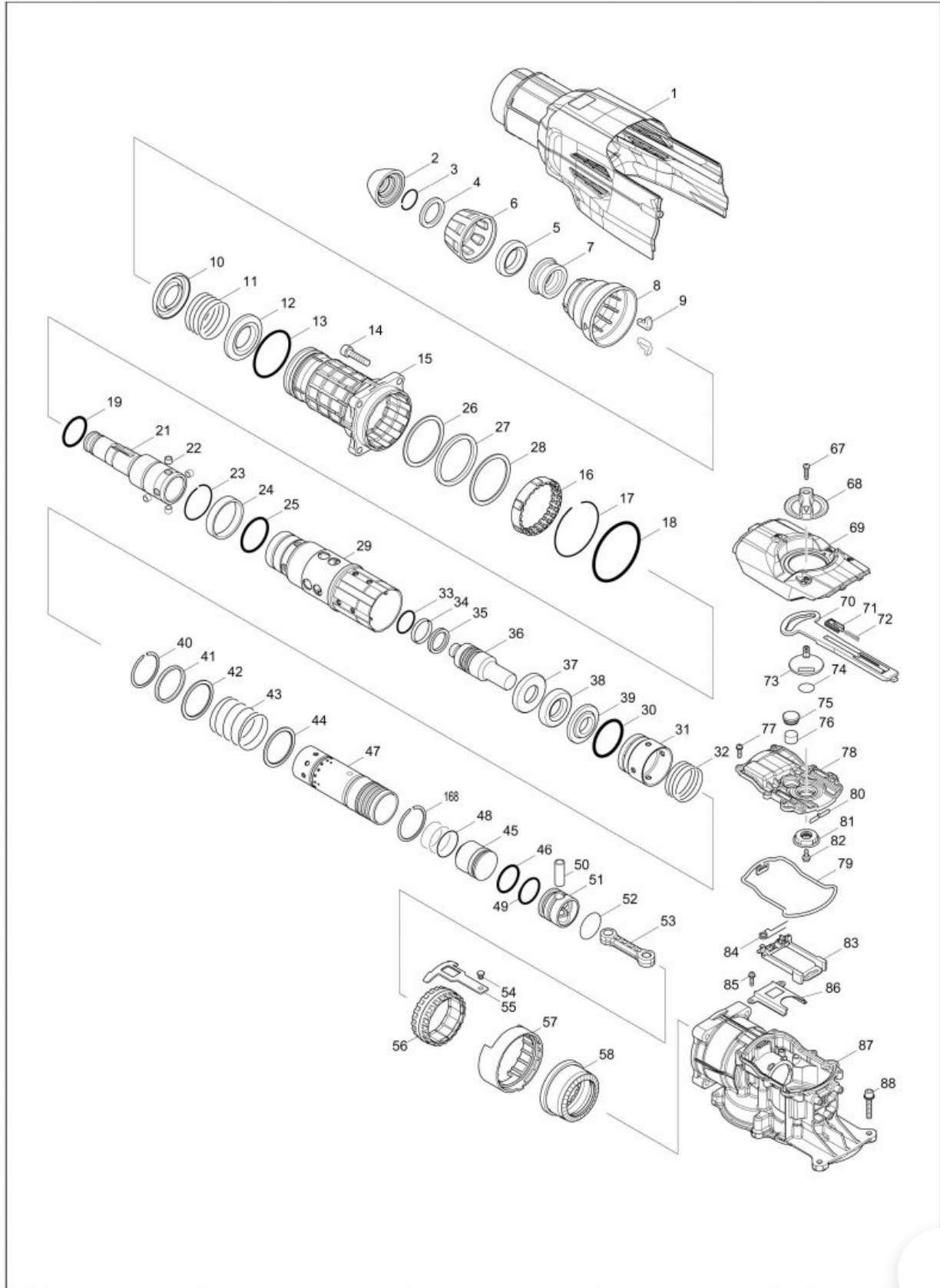


Part Diagram

(MY) HR5202C / ROTARY HAMMER 52MM



Item	Sub	Parts No.	Parts Description	Qty
001		142412-2	HOUSING COVER B COMPLETE	1
	C10	810100-6	CAUTION LABEL	1
002		286292-7	TOOL HOLDER CAP	1
003		233948-3	RING SPRING 25	1
004		257367-9	RING 28	1
005		262172-1	RUBBER RING 29	1
006		454767-6	CHUCK COVER	1
007		324752-2	CHUCK RING	1
008		454768-4	RELEASE COVER	1
009		310178-4	TOOL RETAINER	2
010		346751-4	SPRING GUIDE	1
011		234317-1	COMPRESSION SPRING 49	1
012		346751-4	SPRING GUIDE	1
014		922456-6	HEX. SOCKET HEAD BOLT M8X35	4
015		142408-3	BARREL COMPLETE	1
	C10	213663-5	O RING 55	1
	C20	213778-8	OIL SEAL 42	1
	C30	214603-6	PLANE BEARING 49	1
	C40	259056-2	RING SPRING 54	1
016		454769-2	LOCK SLEEVE	1
017		259057-0	RING SPRING 74	1
018		213766-5	O-RING 78	1
019		213789-3	O-RING 38	1
021		326361-3	TOOL HOLDER A	1
022		268308-0	PIN 9	4
023		231989-3	RING SPRING 46	1
024		257353-0	RING 49	1
025		213779-6	O-RING 45	1
026		267477-4	FLAT WASHER 60	1
027		262171-3	RUBBER RING 60	1
028		267477-4	FLAT WASHER 60	1
029		326362-1	TOOL HOLDER B	1
030		213783-5	O-RING 48	1
031		454761-8	SLIDE SLEEVE	1
032		234318-9	COMPRESSION SPRING 45	1
033		213811-6	O-RING 26.5	1
033-1		213811-6	O-RING 26.5	3
034		213780-1	FLUORIDE RING 32.5	1
034-1		213780-1	FLUORIDE RING 32.5	3
035		213776-2	X-RING 26	1
036		326374-4	IMPACT BOLT	1
036-1		327245-8	IMPACT BOLT	1
036-2		327245-8	IMPACT BOLT	1
037		257354-8	RING 23	1
038		262173-9	RUBBER RING 24	1
039		267856-6	SHOULDER WASHER 23	1
040		257994-2	RETAINING RING(EXT)WR-44	1
041		257355-6	RING 44	1
042		267478-2	FLAT WASHER 44	1
043		234319-7	COMPRESSION SPRING 46	1
044		267478-2	FLAT WASHER 44	1
045		326377-8	STRIKER	1
046		213781-9	O-RING 33	1
047		332093-2	CYLINDER 40	1
048		213460-9	O RING 35	1
049		213782-7	O-RING 30	1
050		257820-5	SLEEVE 9	1
051		319097-1	PISTON	1

Item	Sub	Parts No.	Parts Description	Qty
051-1		312A68-3	PISTON	1
052		213460-9	O RING 35	1
053		454765-0	CONNECTING ROD	1
054		256548-2	FLAT FILLISTER HEAD PIN 6	1
055		346749-1	LINK PLATE	1
056		313272-1	DRIVING SLEEVE	1
057		454779-9	GUIDE RING	1
058		227625-7	SPIRAL BEVEL GEAR 33	1
059		286255-3	CAP 13	2
059-1		286044-6	CAP 13	2
067		265995-6	TAPPING SCREW 4X18	1
068		454326-6	CHANGE LEVER	1
069		319082-4	CRANK CAP COVER	1
070		454770-7	CONTROL PLATE	1
071		454771-5	SLIDE PLATE	1
072		234284-0	COMPRESSION SPRING 4	1
073		454345-2	CRANK LEVER	1
074		213262-3	O RING 18	1
075		424607-2	FILTER CAP	1
076		443129-3	FILTER	1
077		911128-8	P.H.SCREW M4X16 WITH WR	6
078		454764-2	CRANK CAP	1
079		424608-0	SEAL RING B	1
079-1		422787-8	SEAL RING B	1
080		232280-2	LEAF SPRING	1
081		454766-8	LINK LEVER	1
082		911511-9	PAN HEAD SCREW M4X10	1
083		454778-1	LINK GUIDE	1
084		233611-8	TORSION SPRING 7	1
085		911128-8	P.H.SCREW M4X16 WITH WR	2
086		346748-3	GUIDE RAIL	1
087		142407-5	CRANK HOUSING B COMPLETE	1
088		922359-4	H.S.H.BOLT M6X35 WITH WG	2
089		454784-6	BASE B	1
090		911233-1	PAN HEAD SCREW M5X20	3
092		126476-4	TORQUE LIMITER ASSEMBLY	1
	D10		INC. 93-99	
093		227628-1	SPIRAL BEVEL GEAR 10	1
094		211323-3	BALL BEARING 6904LLU	1
095		142410-6	TORQUE LIMITER COMPLETE	1
096		324727-1	SHOULDER WASHER 8	1
097		210005-4	BALL BEARING 608DDW	1
098		253215-0	FLAT WASHER 8	1
099		961004-6	RETAINING RING S-8	1
100		424609-8	SEAL RING A	1
100-1		422786-0	SEAL RING A	1
101		142409-1	GEAR HOUSING COMPLETE	1
102		922359-4	H.S.H.BOLT M6X35 WITH WG	2
103		213231-4	OIL SEAL 15	1
104		326376-0	CRANK SHAFT	1
104-1		327142-8	CRANK SHAFT	1
105		211418-2	BALL BEARING 6006LLU	1
106		254229-2	KEY 5	2
107		227788-9	HELICAL GEAR 46	1
108		227336-4	SPUR GEAR 26	1
109		961102-6	RETAINING RING S-22	1
110		253843-1	FLAT WASHER 12	1
111		331596-3	SLEEVE 12	1
112		211238-4	BALL BEARING 6202LLU	1

Item	Sub	Parts No.	Parts Description	Qty
113		267215-4	FLAT WASHER 15	1
114		517898-3	ARMATURE ASS'Y 220-240V	1
	D10		INC. 111-113,115,116	
115		681642-5	INSULATION WASHER	1
116		210059-1	BALL BEARING 6000DDW	1
117		266568-8	TAPPING SCREW 5X80	2
118		454772-3	BAFFLE PLATE	1
119		636303-2	FIELD 220-240V	1
120		632B59-7	BRUSH HOLDER UNIT	1
121		195844-2	CARBON BRUSH CB-175	1
124		454763-4	GEAR HOUSING COVER	1
125		454757-9	MOTOR HOUSING	1
126		922359-4	H.S.H.BOLT M6X35 WITH WG	2
127		240016-5	FAN 90	1
128		253165-9	FLAT WASHER 8	1
129		252178-7	HEX. NUT M8-12	1
130		454762-6	REAR COVER	1
131		266041-8	TAPPING SCREW 5X25	2
132		692637-3	POWER SUPPLY CORD 1.5-2-5.0	1
133		682560-0	CORD GUARD 10	1
134		265995-6	TAPPING SCREW 4X18	1
135		419024-9	CORD CLAMP BASE	1
136		265995-6	TAPPING SCREW 4X18	1
137		687169-3	STRAIN RELIEF	1
138		632C15-3	LEAD UNIT	1
142		620251-5	CONTROLLER	1
143		265995-6	TAPPING SCREW 4X18	1
144		454346-0	LENS	1
145		234281-6	COMPRESSION SPRING 6	1
146		632A83-4	SWITCH UNIT	1
147		454336-3	SWITCH LEVER C	1
148		187890-9	SWITCH CASE SET	1
	D10		INC. 149	
149		187890-9	SWITCH CASE SET	1
	D10		INC. 148	
150		266041-8	TAPPING SCREW 5X25	2
151		815W32-0	HR5202C NAME PLATE	1
153		454782-0	HANDLE B	1
155		266041-8	TAPPING SCREW 5X25	6
160		454333-9	SWITCH LEVER B	1
164		154626-1	SWITCH HOLDER COMPLETE	1
165		650678-5	SWITCH C3PA-1121	1
166		454760-0	HANDLE COVER	1
167		265995-6	TAPPING SCREW 4X18	1
168		257994-2	RETAINING RING(EXT)WR-44	1
A01		135283-4	SIDE HANDLE 90 ASSEMBLY	1
	C10	252640-2	WING NUT M8	1
	C20	265439-6	HEX. BOLT M8X150	1
	C30	318430-4	SIDE HANDLE BASE 90A	1
	C40	318431-2	SIDE HANDLE BASE 90B	1
	C50	417002-3	SIDE HANDLE CAM	2
	C60	417003-1	SIDE HANDLE	1
	C70	951166-8	SPRING PIN 5-24	1
A02		135629-4	SIDE GRIP ASSEMBLY	1
	C10	158131-0	GRIP 36 COMPLETE	1
	C20	234226-4	COMPRESSION SPRING 6	1
	C30	266163-4	CUP SQUARE NECK BOLT M8X80	1
	C40	313223-4	RACK GUIDE	1
	C50	344492-6	PLATE	1

Item	Sub	Parts No.	Parts Description	Qty
	C60	346750-6	GRIP SPRING 90	1
	C70	453114-8	LOCK BUTTON	1
	C80	454781-2	SIDE GRIP BASE 90	1
A03		194683-7	GREASE VESSEL SET	1
A04		142295-0	PLASTIC CASE COMPLETE	1
	C10	162271-8	LATCH	2
	C20	801Y02-7	INDICATION LABEL	1
A04-1		821601-9	PLASTIC CASE	1
	C10	162271-8	LATCH	2
A05		804K57-7	HR5202C PLASTIC CASE LABEL	2
A06		331955-1	DEPTH GAUGE	1
A07		443122-7	CLOTH	1
B01		191K75-7	HAMMER SERVICE KIT	1
	C10	181490-7	HAMMER GREASE 30G	4
	D10		INC. 2,33,34,46,49,121	